

## PRESS RELEASE

**Nobi Talai Make-Up Autumn & Winter 2016/17 by CATRICE**

Today Nobi Talai presented the Autumn & Winter Collection 2016/17 in the impressive location of the Kronprinzenpalais as part of the Berliner Mode Salon. All models received a professional make-up styling with CATRICE products for the runway show.

In collaboration with CATRICE, Loni Baur as Head of Make-up created a casual-elegant look that incorporates the low-key, natural tones of the collection on the eyes. A subtle glow with soft highlights perfectly complements the modern nomad look.

Here is a step-by-step guide to creating the make-up of the show:

Step 1: First, cleanse the skin thoroughly and create a “flawless skin” look with the help of the **Even Skin Tone Make up**. This product makes irregularities, redness and light shadows under the eyes disappear.



Step 2: The **Blush Artist Shading Palette 010 BronzÉclat** perfectly defines the facial features and provides the cheekbones with a touch of colour.



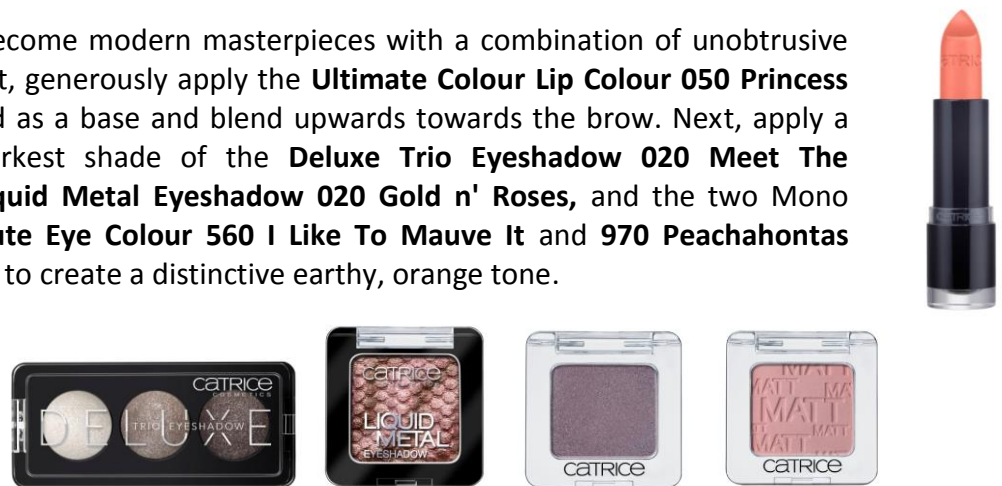
Step 3: Brush the brows in the direction of growth and fill in any gaps with the tinted sponge applicator of the **Eye Brow Stylists 020 date with ash-ton**.



Step 4: Set soft highlights on the temples, the bridge of your nose and the inner corners of the eyes with the **High Glow Mineral Highlighting Powder 010** and the **Highlighting Eyeshadow 020 Rosefeller Center** for an elegant glow and a fresh look.



Step 5: The eyes become modern masterpieces with a combination of unobtrusive natural shades. First, generously apply the **Ultimate Colour Lip Colour 050 Princess Peach** on the eyelid as a base and blend upwards towards the brow. Next, apply a mixture of the darkest shade of the **Deluxe Trio Eyeshadow 020 Meet The Gemstones**, the **Liquid Metal Eyeshadow 020 Gold n' Roses**, and the two Mono Eyeshadows **Absolute Eye Colour 560 I Like To Mauve It** and **970 Peachahontas** across the entire lid to create a distinctive earthy, orange tone.



Step 6: Shape the lashes and give them a gorgeous shine with the **Lash Brow Designer Shaping And Conditioning Mascara Gel 010**.



Step 7: To achieve a timeless rosewood shade, first apply the **Ultimate Stay Lipstick 130 Rusty's Gold & Treasure** on the lips as a base and add a silky shine with the **Pure Shine Colour Lip Balm 010 Rose & Woody**. Make sure that the contours of the lips phase out gently and lightly dab off any excess colour.



Step 9: Paint the nails in the restrained anthracite shade **Ultimate Nail Lacquer 116 GREYzy In Love**.



The product images for this look can be downloaded here:

**[www.cosnova-mediabox.com](http://www.cosnova-mediabox.com)**

Userdetection: pub502101

Password: dicasu01

valid time: 12.01.2017